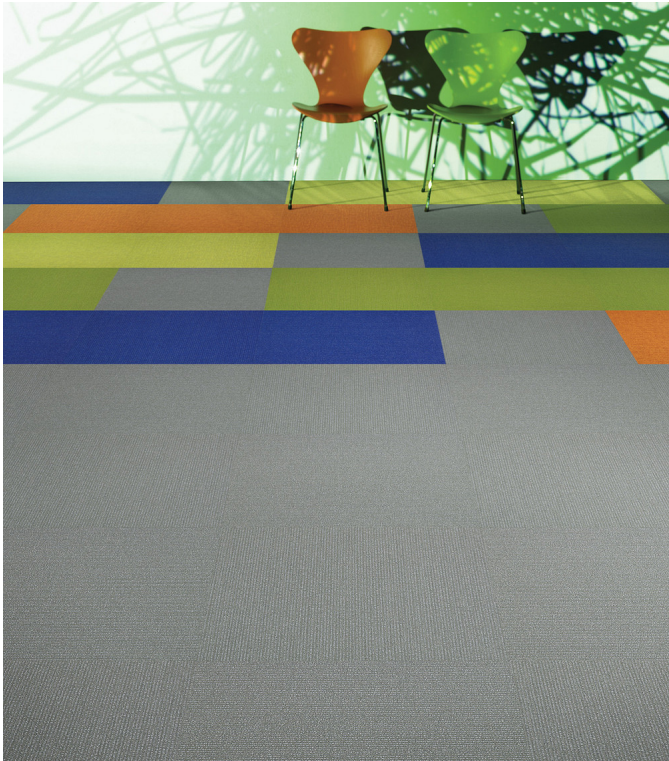
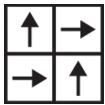


Applied Tile

Type De Produit	Dalles De Moquette	
Collection	Light Series	
Numéro Du Style	5T004	
Construction	Tufté Structuré Bouclé à Motif	
Fibre	Ecosolution Q100™ Nylon	
Méthode De Coloration	100% Solution Teinte	
Sous-couche Primaire	Synthétique	
Sous-couche Secondaire	Dalle Ecoworx®	
Traitements Protecteurs	SSP® Shaw Protection Du Sol	
Adhésif Recommandé	LokDots, 3000 Carpet Tile 1 Gallon, 4151 Multi-Use Carpet Tile 4 Gallon, 5000 Carpet Tile 1 Gallon, LokWorx Adhesive Tabs, 3800 Indoor Outdoor Carpet Tile 4 Gallon, 5000 Carpet Tile 4 Gallon or 3000 Carpet Tile 4 Gallon	
	u.s.	metric
Dimensions Du Produit	24 in x 24 in	61 cm x 61 cm
Surface Par Carton	48 ft²	4.46 m²
Pièces Par Carton	12 pcs	
Jauge	1/12 in	47.2 per 10 cm
Points	9.5 per in	37.0 per 10 cm
Densité Moyenne	7266 oz/yd³	0.269 g/cm³
Kilotex		12.52
Epaisseur Du Velours	0.262 in	6.65 mm
Poids Tufté	22 oz/yd²	745.9 g/m²



Méthodes d'Installation Conseillées



Quarter Turn

Données + Tests Et Essai

Panneau Rayonnant (Astm E648)	Class I
Nbs Smoke	Less Than 450
Propension Electrostatique	Less Than 3.5 kv
Label Cri Green Label Plus (Glp)	GLP9968
Test d'Inflamabilité	Pass*
Ada Compliance	>0.6, Meets the recommended static coefficient of friction for ADA walking surfaces and accessible routes***

Test Reports may be included or listed by the manufacturing/inventory style number as opposed to the noted selling style number.

Garanties

Durée De Vie Commerciale Limitée

Coordination Des Produits

Carpet Tile: **Vibrant Tile, Visible Tile, Absorbed Tile**

Attributs + Certifications

Certifications Below Apply Exclusively To The Carpet Tile Rug Itself And Not The Lokworx Tabs Adhesive

Certification Cradle to Cradle™ (C2C)	Silver Level (Version 4.0)
Déclaration sanitaire de produit (HPD)	Transparence 1 000 ppm
Déclaration environnementale de produit (EPD)	Certifié Par Un Organisme Tiers Conformément Aux Normes ISO14044, ISO 14025 & EN15804
Embodied Carbon (Cradle to Gate)	4.85 kg CO₂/m²
Life-Cycle Carbon Emissions	Carbon Neutral
Living Building Challenge (LBC)	Free of Red List Chemicals
Déclarer	LBC Compliant
NSF 140	or
CRI Green Label Plus (GLP)	GLP9968
Singapore Green Label	Certifié
Label CE (EN 14041)	Certifié Par Un Organisme Tiers
garantie environnementale	Re[turn] Reclamation Program* Through Our Environmental Guarantee, Shaw Pledges to Transport And Recycle Any Ecoworx Carpet.
contenu recyclé total	61% (Pre-Consumer 61% Post-Consumer 0%)
emballage du produit	100% Recyclable
pays d'origine	USA

Contribution À La Certification Leed

MR Credit: Building Product Disclosure and Optimisation Environmental Product Declarations - Option 1: Environmental Product Declaration (EPD)	3rd Party Certified in Accordance with ISO14044, ISO14025 & EN15804
MR Credit: Building Product Disclosure and Optimisation Material Ingredients - Option 1: Material Ingredient Reporting	C2C Silver Level (Version 4.0) or HPD (Version 2.1)
MR Credit: Building Product Disclosure and Optimisation Material Ingredients - Option 2: Material Ingredient Optimization	C2C Silver Level (Version 4.0)
MR Credit: Building Product Disclosure and Optimization Sourcing of Raw Materials - Option 2: Leadership Extraction Practices	Environmental Guarantee: Re[turn] Reclamation Program* Through Our Environmental Guarantee, Shaw Pledges to Transport And Recycle Any Ecoworx Carpet.
"Crédit EQ : matériaux faibles émissions Option 1 : calculs par catégorie de produit"	Certified
MR Credit: Interiors Life-Cycle Impact Reduction Option 3: Design for Flexibility	Ecoworx Tile with Lokdots Installation System

Indice De Réflexion Lumineuse

					
Ionized 04111 LRV 23.4	Optics 04155 LRV 17.8	Marlite 04210 LRV 18.2	Brilliant 04284 LRV 26.6	Aurora 04322 LRV 8.5	Night Vision 04326 LRV 14.5
					
Aquarious 04327 LRV 16.5	Phase 04401 LRV 2.7	Cosmic 04429 LRV 5.2	Quartz 04436 LRV 15.3	Eclipse 04505 LRV 2.3	Crystal 04515 LRV 20.9
					
Emit 04530 LRV 12.5	Beam 04557 LRV 7.8	Frequency 04585 LRV 4.9	Glare 04595 LRV 11.6	Solar Flare 04668 LRV 10.2	Lava 04675 LRV 15.8
					
Aspect 04715 LRV 8.2	Sepia 04751 LRV 5.6	Equinox 04760 LRV 6.6	Pixel 04761 LRV 9.7	Laser 04855 LRV 6.8	Amethyst 04982 LRV 3.5

Informations Supplémentaires

* To learn more about the recyclability of our products and our re[TURN], please visit shawcontract.com/sustainability.

**Meets or exceeds all local and national regulations in country of manufacture.

***This carpet is manufactured to be ADA compliant, but to be fully ADA compliant, the end-user must ensure the carpet is adhered to the floor and installed as outlined in the ADA standards.

[Installation Guidelines](#)

[Maintenance Guidelines](#)

Specifications are subject to nominal manufacturing variance. Material supply and/or manufacturing processes may necessitate changes without notice.

This product is an exclusive design and may not be duplicated in any manner. Use of this design in the creation of another product design is also strictly prohibited.

Visit shawcontract.com/testing for more information.

